



# Protect Your Investment & Increase The Life Of Your Project With **STAINLESS-STEEL CHANNELS & FITTINGS**



Mainly Used In

**Wastewater Facilities**

**Oil/Gas Refineries**

**Drilling Sites**

**Bridges & Tunnels**

Haydon offers a variety of Stainless-Steel Channels and Fittings for any job application to help contractors and designers protect and increase the life of their projects. Our stainless-steel products are carefully manufactured from prime structural stainless-steel Type 304 and 316L, making them the ideal choice for many applications.

## APPLICATIONS & BENEFITS

### MAINLY USED IN:

- Industrial areas with high humidity and aggressive atmosphere.
- Coastal areas with high salinity.
- Production rooms with high humidity and some air pollution including food-processing plants, laundries, breweries, dairies.
- Chemical plants, swimming pools, coastal ship, and boatyards.
- Building rooftops

### HOW IT HELPS YOUR PROJECT:

- Corrosion resistant material, making it ideal for any extreme temperature or pressure areas.
- More durability – can endure weight as well as extreme weathers.
- Longer life cycle than other steel channels or fittings.
- Better corrosion protection than other materials.

### CHANNEL MATERIAL

- ASTM A-240 - Stainless Steel Type 304/316L - Heat Resisting Chromium Nickel Stainless Steel Plate, Sheet Strip

### FITTING MATERIAL

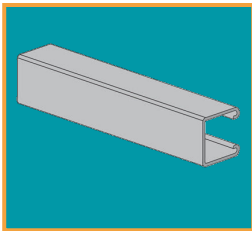
- ASTM A-240 - Stainless Steel Type 304/316



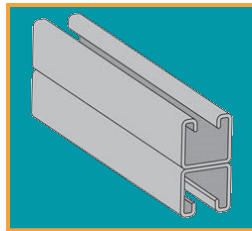
# Protect Your Investment & Increase The Life Of Your Project With **STAINLESS-STEEL CHANNELS & FITTINGS**



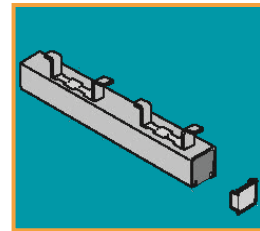
## MOST POPULAR AVAILABLE IN STAINLESS-STEEL



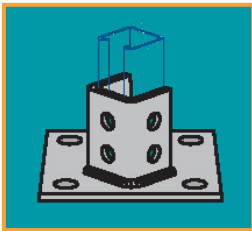
**CHANNELS**



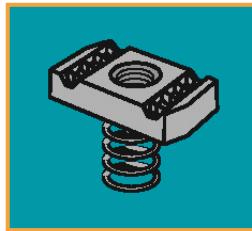
**WELDED CHANNELS**



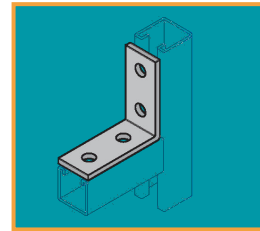
**CONCRETE INSERTS**



**POST BASES**



**GRIP LOCK NUTS**



**ANGLES & CONNECTORS**

For a complete list of all Stainless-Steel products, call us to speak to one of our dedicated Customer Service Reps.  
All stainless-steel products are stamped, color coded for easy steel type identification.