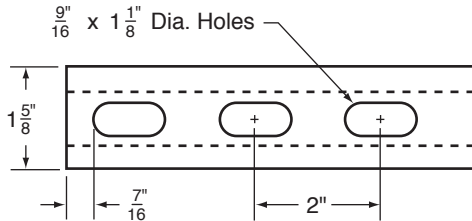
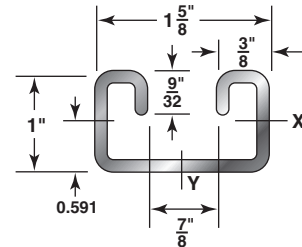
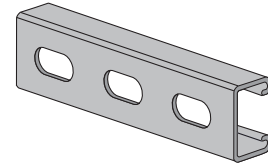


H-152-OS

1" X 1⁵/₈"
12 Gauge Channel
wt./100 ft. - 144#

Stocked in pre-galvanized, plain & powder coated Supr-Green, in both 10 & 20 ft. lengths. Note: Also available in Stainless Steel 304 & 316L Alloys. Other materials, finishes & lengths are available upon request.



Specifications

GENERAL

H-STRUT channels are manufactured by a series of forming dies, or rolls, which progressively cold work the strip steel into the desired channel configuration. This method produces a cross section of uniform dimensions within a tolerance of plus or minus 0.015", on outside dimensions.

LENGTH INFORMATION

H-STRUT Channels are produced and stocked in 10' and 20' lengths with a tolerance of $\pm 1/8"$. Other lengths are available upon request.

LOADING DATA

1. When calculating load at center of span, multiply load from table by 0.5 and deflection by 0.8.
2. When calculating beam and column loads for aluminum, multiply by 33%.

MATERIAL

H-STRUT channels are produced from prime structural steel covered by the following specifications. (See technical section for additional information)

- Pre-Galvanized SteelASTM A-653
 - Plain SteelASTM A-1011-04-SS
 - Aluminum (Type 6063T6)ASTM B-221
 - Stainless Steel (Type 304 & 316L)ASTM A-240
- Other materials and specifications available on request.

FINISHES

All H-STRUT channels are stocked in pre-galvanized and powder coated Supr-Green. Some sizes are stocked in zinc trivalent chromium, PVC or hot dipped galvanized.

- Hot Dipped Galvanized.ASTM A-123
- Zinc Trivalent Chromium.ASTM B-633-85
- Powder Coated Supr-Green.ASTM B-117
- PVC Coating 40 ML Thickness - Available Upon Request

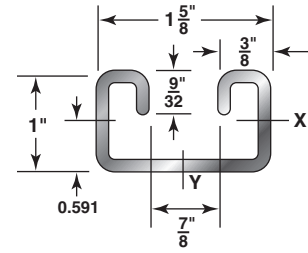
H-152-OS

1" X 1⁵/₈"
 12 Gauge Channel
 wt./100 ft. - 144# (Cont.)

SECTION PROPERTIES

Catalog No.	Wt./Ft. Lbs.	Area of Section Sq. In.	X-X Axis			Y-Y Axis		
			I in ⁴	S in ³	r in.	I in ⁴	S in ³	r in.
H-152-OS	1.44	0.423	0.055	0.095	0.361	0.162	0.199	0.619

I = Moment of Inertia S = Section Modulus r = Radius of Gyration



Span or Unbraced Height (In)	Static Beam Load (X-X Axis)						Max. Allowable Load at Slot Face (Lbs)	Column Loading Data			
	Max Allowable Uniform Load (Lbs)	Deflection at Uniform Load (In)	Uniform Load at Deflection					Max. Column Load Applied at C.G.			
			Span/180 Deflection (Lbs)	Span/240 Deflection (Lbs)	Span/360 Deflection (Lbs)	Weight of Channel (Lbs)		k=.65 (Lbs)	k=.80 (Lbs)	k=1.0 (Lbs)	k=1.2 (Lbs)
12	1,600	0.02	1,600	1,600	1,600	1.5	2,790	9,290	9,050	8,700	8,350
18	1,070	0.05	1,070	1,070	1,070	2.2	2,660	8,740	8,350	7,860	7,430
24	800	0.09	800	800	600	3.0	2,500	8,180	7,710	7,190	6,710
30	640	0.14	640	580	380	3.7	2,350	7,670	7,190	6,500	5,410
36	530	0.20	530	400	270	4.5	2,190	7,240	6,710	5,410	4,150
42	460	0.27	390	290	200	5.2	2,000	6,900	5,840	4,350	3,070
48	400	0.36	300	230	150	6.0	1,810	6,280	4,980	3,390	2,350
60	320	0.56	190	140	100	7.5	1,440	4,870	3,390	2,170	1,510
72	270	0.80	130	100	70	8.9	1,150	3,560	2,350	1,510	**
84	230	1.09	100	70	50	10.4	940	2,620	1,730	**	**
96	200	1.42	80	60	40	11.9	**	2,000	**	**	**
108	180	1.80	60	40	30	13.4	**	1,580	**	**	**
120	160	2.22	50	40	20	14.9	**	**	**	**	**
144	130	3.20	30	30	20	17.9	**	**	**	**	**
168	110	4.35	NR	NR	NR	20.9	**	**	**	**	**
180	110	5.00	NR	NR	NR	22.4	**	**	**	**	**
192	100	5.68	NR	NR	NR	23.8	**	**	**	**	**
216	90	7.19	NR	NR	NR	26.8	**	**	**	**	**
240	80	8.88	NR	NR	NR	29.8	**	**	**	**	**

Bearing Load may limit load

NR = Not Recommended

** Not recommended - KL/r exceeds 200

Notes

- The beam capacities shown above include the weight of the strut beam. The beam weight must be subtracted from these capacities to arrive at the net beam capacity.
- Allowable beam loads are based on a uniformly loaded, simply supported beam. For capacities of a beam loaded at midspan at a single point, multiply the beam capacity by 50% and deflection by 80%.

3. The above chart shows beam capacities for strut without holes. For strut with holes, multiply by the following:

OS by 88%

4. Refer to the latest Haydon Engineering Catalog in our Literature Section for reduction factors for unbraced lengths or call us 1-800-2-HAYDON.

Project Information			
Project:		Notes:	
Address:			
Contractor:			
Engineer:	Date:		
Approval			
<input type="checkbox"/> Approved <input type="checkbox"/> Approved as Noted <input type="checkbox"/> Not Approved		Signature:	
		Remarks:	